



**3 Bed  
Apartment  
located in**



# Ground Floor Flat, 7 St. Mary Road London E17 9RG



3



2



1



## £2,100 Per Month

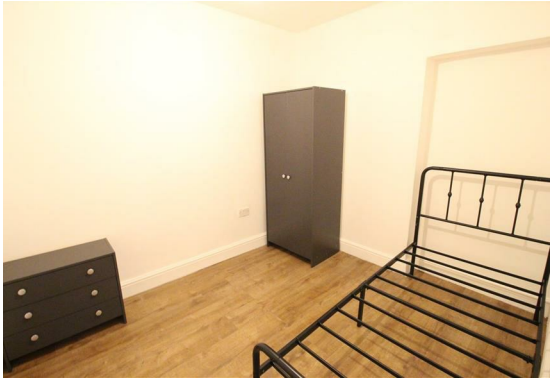
Sincere Lettings are pleased to offer this spacious ground floor 3-bedroom flat located on the ever-popular St. Mary Road, right in the heart of Walthamstow. The property benefits from a private rear garden, ideal for relaxing or entertaining, and is offered fully furnished.

- Three double bedrooms
- Open-plan living and kitchen area
- Ground floor with private garden
- Shower room with separate WC
- Permit street parking available
- 5-minute walk to Walthamstow Central Station (Victoria Line & Overground)
- Moments from Walthamstow Market & local amenities

Available now — perfect for sharers or professionals seeking a well-located home in central Walthamstow







Ground Floor Flat, 7 St. Mary Road, London, E17 9RG

Energy Efficiency Rating		
	Current	Potential
<i>Very energy efficient - lower running costs</i>		
(92 plus) <b>A</b>		
(81-91) <b>B</b>		
(69-80) <b>C</b>		
(55-68) <b>D</b>		
(39-54) <b>E</b>		
(21-38) <b>F</b>		
(1-20) <b>G</b>		
<i>Not energy efficient - higher running costs</i>		
<b>England &amp; Wales</b>	EU Directive 2002/91/EC	

## DIRECTIONS

## CONTACT

252 Hoe Street  
London  
E17 3AX

E: [admin@sincerelettings.co.uk](mailto:admin@sincerelettings.co.uk)

T: 02085200425

[www.sincerelettings.co.uk](http://www.sincerelettings.co.uk)

